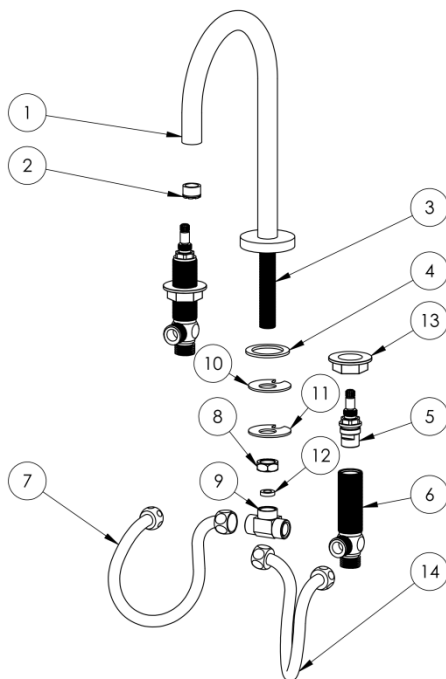
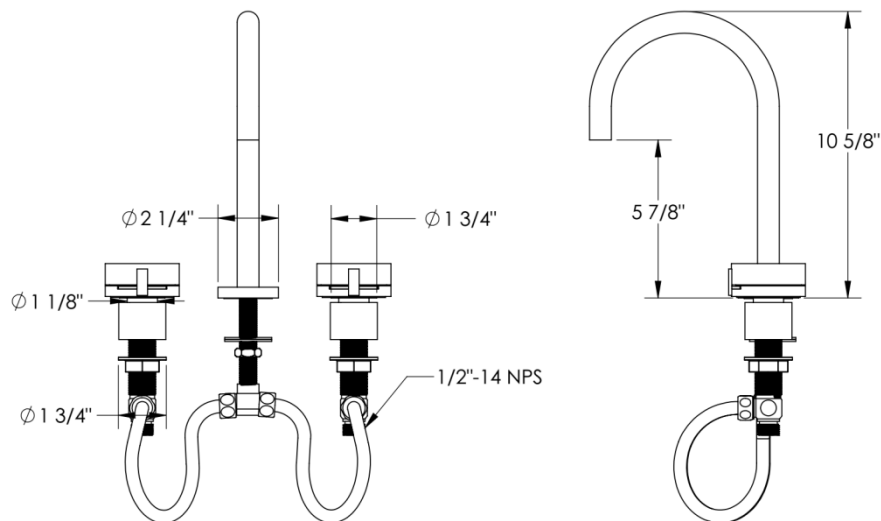


FEATURES

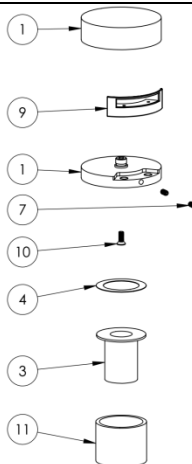
- ¼ turn washerless ceramic disc valve cartridges
- Flexible hose connection for 8" to 16" spread installations
- Flow rate 1.2 gpm (4.5 lpm) maximum flow rate
- Solid brass construction
- Listed by CSA, NSF, and other municipalities
- Warranty:
 - Limited lifetime warranty (residential use)
 - One year (commercial use)
- Shipping weight (lbs.) 10
- Shipping dimensions (in.): 29x12x4



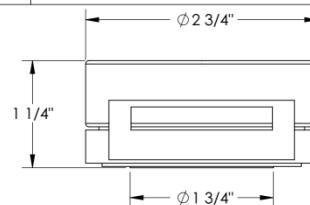
ITEM NO.	PART NUMBER	QTY.
1	22-2-SPT	1
2	Cache PCA TJ - 1.2 GPM	1
3	142-NPPL	1
4	22-2-1.8IN GASKET	1
5	CRT502	2
6	SS-502-VALVE BODY	2
7	502 FLEX HOSE	1
8	142-LOCK-NUT	1
9	142-TEE	1
10	142-RBBR-HRS-SHOE-WSHR	1
11	142-HRS-SHOE-WSHR	1
12	142-TEE-GSKT	1
13	502-PLSTC-LOCK-NUT	2
14	502 FLEX HOSE	1

HANDLE TRIMS

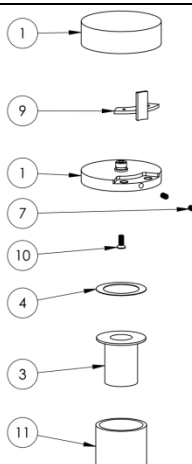
Elements Bridge (Code: E1♦)



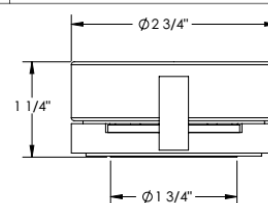
ITEM NO.	PART NUMBER	QTY.
1	ELMNT-HNDL-BASE	1
2	ELEMNT-HNDL-COVER	1
3	ZEN-MGNT-TOP-LOCK-NUT	1
4	PLSTC-WSHR	1
7	#8-32 SOCKET; CUP POINT; 5/16" LENGTH	2
9	ELMNT-INSERT (SCALLOP OR BRIDGE)	1
10	#8-32 FLAT HEAD ; 7/16" LENGTH	1



Elements Scallop (Code: E2♦)



ITEM NO.	PART NUMBER	QTY.
1	ELMNT-HNDL-BASE	1
2	ELEMNT-HNDL-COVER	1
3	ZEN-MGNT-TOP-LOCK-NUT	1
4	PLSTC-WSHR	1
7	#8-32 SOCKET; CUP POINT; 5/16" LENGTH	2
9	ELMNT-INSERT (SCALLOP OR BRIDGE)	1
10	#8-32 FLAT HEAD ; 7/16" LENGTH	1



Note: ♦ denotes the cover finish

IMPORTANT INSTALLATION INFORMATION

- USE TEFLON TAPE OR PIPE SEALANT FOR THREADED CONNECTIONS
- DO NOT USE PLUMBER'S PUTTY ON ANY OF THE BRASS COMPONENTS
This will cause the finish to tarnish and void the warranty. A non-corrosive Alkoxy Silicone is recommended.
- DURING SWEATING OF LINES DO NOT OVERHEAT CASTING
Overheating may cause damage to internal mechanism
- COPPER ADAPTORS MAY BE REQUIRED TO COMPLETE YOUR INSTALLATION

For technical support, please call 718-257-2800

Rev. 1/1